



## 70. KANDAHAR RENNEN

# MEDIA-GUIDE 2024

### PROGRAMM HERREN

DAS RENNEN

TICKETS SICHERN

#### SUPER-G

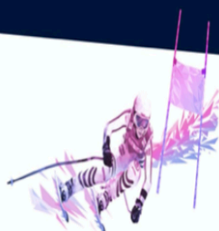
Samstag, 27.01.2024

Start: 11.45 Uhr

#### SUPER-G

Sonntag, 28.01.2024

Start: 11.30 Uhr



#### ABFAHRT

Samstag, 03.02.2024

Start: 11.00 Uhr

### PROGRAMM DAMEN

DAS RENNEN

TICKETS SICHERN

#### SUPER-G

Sonntag, 04.02.2024

Start: 11.00 Uhr

# 70. Kandahar-Races

## Table of Contents

| Presentation of the Organizing Committee

| Accreditation / Media Center

| Media Information

| Side Events (Ceremonies)

| Finish Area

| TV and Social Media Service

| Getting There

| Contacts



# LOC - Ski-Worldcup Garmisch-Partenkirchen

Since 2022, Martina Betz has been the President of the Local Organizing Committee (LOC). During the weeks of the FIS Ski-Worldcup, she leads a team of approximately 500 volunteers on and around the Kandahar-slope! Further, Mrs. Betz is the president of the local ski-club (SC-Garmisch).

Peter Fischer long time president of SCG and LOC and CEO of the 2011 FIS-Ski-World-Championships in Garmisch-Partenkirchen. He currently holds the role of Financial Director of the LOC.

President: Martina Betz

Head of Finance, Contractual Affairs: Peter Fischer

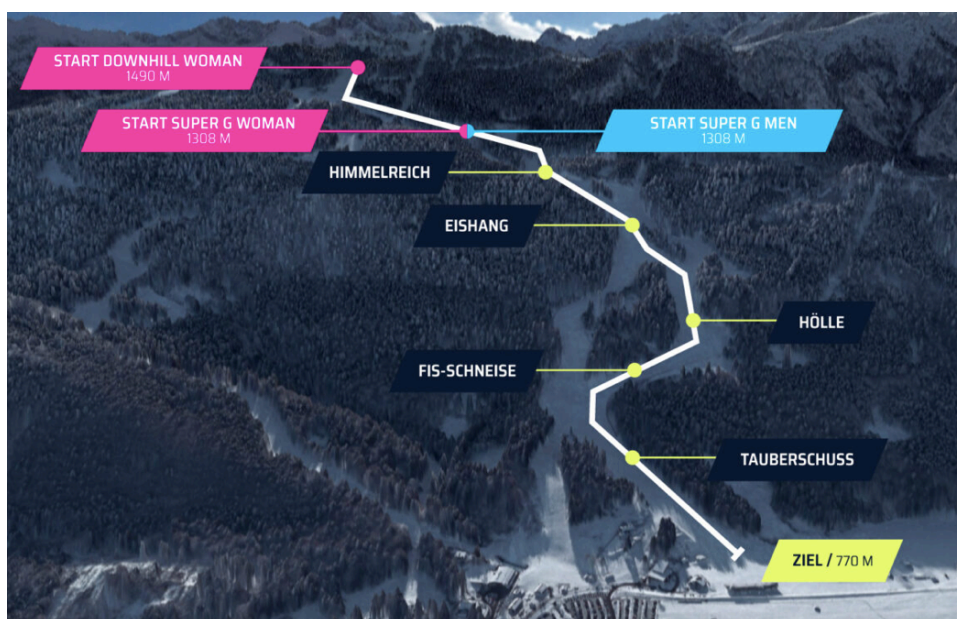
Race Director Men: Markus Anwander

Race Director Women: Steffi Wild

Head of Race-Office: Birgit Seipp

Race-Organization: Severin Guggemoos

Marketing & Events: Michael Weber



## Accreditation:

Location: Kongresshaus, Richard-Strauß-Platz 1, 82467 Garmisch-Partenkirchen

Opening hours:

Super-G Men, 27. / 28.01.24

23.01.: 13:00 - 18:00

24.01.: 08:00 - 18:00

25.01.: 08:00 - 19:00

26.01.: 08:00 - 19:00

27.01.: 07:30 - 18:00

28.01.: 07:30 - 13:00

Downhill a. Super-G Women, 03. u. 04.02.24

30.01.: 13:00 - 18:00

31.01.: 08:00 - 18:00

01.02.: 08:00 - 19:00

02.02.: 08:00 - 19:00

03.02.: 07:30 - 18:00

04.02.: 07:30 - 13:00

## Media Center:

The media center is located at „Haus des deutschen Skilehrer-Verbands (DSLVB)“, An der Kandahar 11, 82491 Grainau. The building is situated on the left hand side of the grandstand (when looking onto the slope).

Opening hours:

Men -Races 27./28.01., 11:45 and 11:30 starting times for Super-G races:

26.01.: 09:30 - 16:00

27.01.: 08:00 - 18:00

28.01.: 08:00 - 17:00

Women-Races 03.02. Downhill, 04.02. Super-G, both 11:00h starting time + Practice 01./02.02.

01.02.: 09:00 - 16:00

02.02.: 09:00 - 17:00

03.02.: 08:00 - 18:00

04.02.: 08:00 - 18:00

## Head of TV and Media:

Uli Nett - [uli.nett@skiweltcup-garmisch.com](mailto:uli.nett@skiweltcup-garmisch.com), mobile: +49(0)162-4007711

## Photographers:

Slope access for photographers is fixed and regulated by the FIS. Only registered photographers can get a bib for the slope.

Pick up of these bibs - with a deposit of 10 € - is only possible at the accreditation office (Kongresshaus, Richard-Strauß-Platz 1, 82467 Garmisch-Partenkirchen)

The use of crampons is mandatory on the slope!

All accredited photographers have access to the designated zones in the finish area.

## Press Conferences:

After the races, no press conferences are planned!

All interviews and statements must be held during the ongoing race starting from bib number 31 to the last racer in the finish!

In special cases, the LOC together with FIS-officials will decide when and where a press conference is to be held. In such cases, the invitation will be provided via the WhatsApp service.

## Parking:

The issuance of parking-permits is strictly regulated due to limited parking capacity.

However, there is a shuttle-service from the accreditation office at „Kongresshaus“ to and from the finish-area. These shuttles are running continually as needed!

Friday, 26.01.:	09:30 – 16:00	Thursday 01.02.:	09:00 – 16:00
Saturday 27.01.:	08:00 – 17:00	Friday 02.02.:	09:00 – 16:00
Sunday 28.01.:	08:00 – 17:00	Saturday 03.02.:	08:00 – 17:00
Sunday 04.02.:	08:00 – 17:00		

## Social Media:

You may find our web-site under [www.skiweltcup-garmisch.com](http://www.skiweltcup-garmisch.com)

Further, we recommend the use of our instagram channel under @skiworldcup\_gap

All accredited persons are automatically registered for our WhatsApp-Service. There you will get informations to the races, interviews and statements of racers and officials.

There is also the Telegram-Service from FIS:

Men: <https://t.me/+rlq3nMFD5NkyYTQ8>

Women: <https://t.me/+SGIDDmBjcDilwYy1>

Side Events (Ceremonies):

**Men-Races 27./28. 01. 2024:**

Saturday 27.01. has the following motto:

**Heroes**  
**Legenden hautnah erleben**

In the evening starting at 6:00pm there is the

**Party im Park**

Including the prize-giving ceremonie with the draw

Sunday 28.01. is with this motto:

**Boarisch**  
**Frühschoppen mit boarischer Live-Musik, Weißwürscht & Bier**

**Women Races 03./04. 02. 2024:**

Saturday 03.02. has the motto:

**Power Frauen**  
**Starke Frauen – Inspiration im Skisport & im Leben**

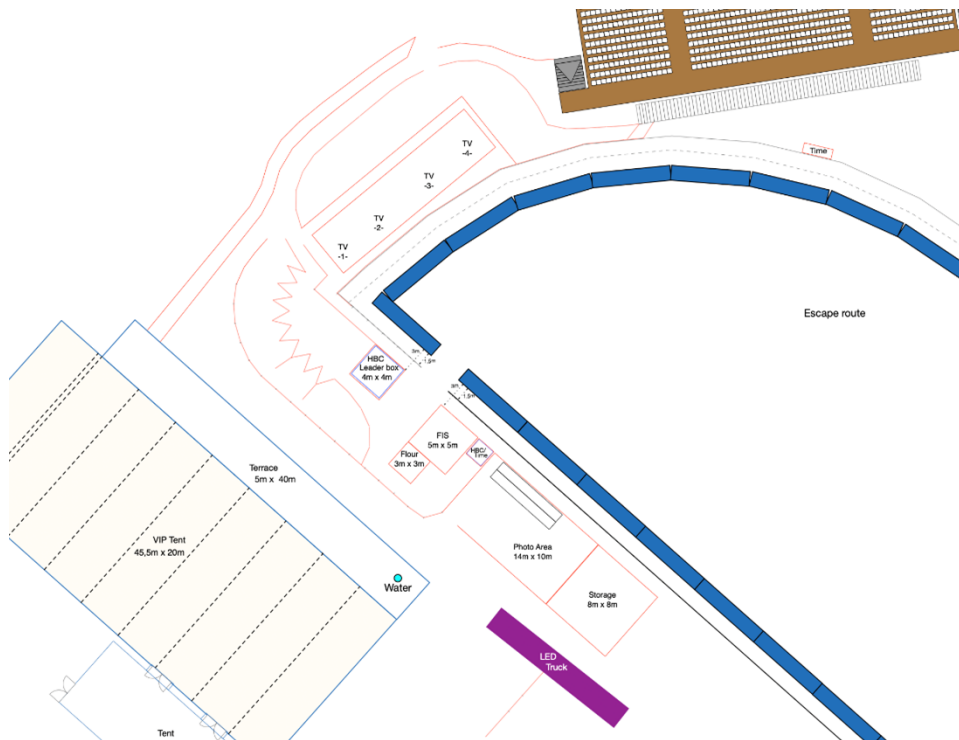
In the evening starting at 06:00pm prize-giving ceremonie and draw is held in the pedestrian area in front of the 'Spielbank'

Sunday is with this motto:

**Family Day**  
**Mitmachen für die ganze Familie**



## Finish Area:



Media-Center: 80 workspaces

WLAN

Power Connections

Catering



## Important Information for TV and Social-Media:

### German Media:

Men-races are broadcasted by ZDF, women-races on the following weekend by ARD.

Other german TV-stations, agencies, internet and social media providers, etc. who want to broadcast these events, need a filming-permit issued by the German-Ski-Federation as the Host-Broadcaster!

### Contact-Person:

Tim Antwerpes, [tim.antwerpes@deutscherskiverband.de](mailto:tim.antwerpes@deutscherskiverband.de), m: +49(0) 176 32401142

### International Media:

The multinational rights of this event belong to „*Infront Sports & Media AG*“.

International TV-stations, agencies and internet and social media providers need in addition to the accreditation a „Audio / Video Policy“ of the rights-holder named above!

### For a permit contact:

Infront Sports & Media AG - [www.infrontsports.com](http://www.infrontsports.com) or  
[philipp.satorina@infrontsports.com](mailto:philipp.satorina@infrontsports.com)

### WhatsApp Media-Service:

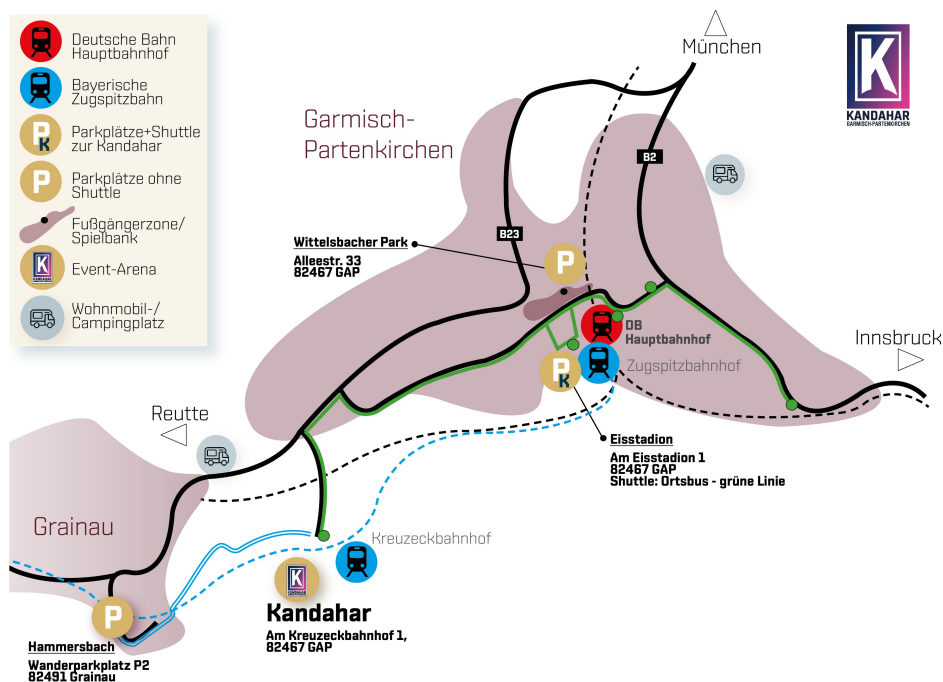
In case of problems with the WhatsApp-Service provided for all accredited persons, please contact:

Karoloina Krolo, [karolina.hofmeister@skiweltcup-garmisch.com](mailto:karolina.hofmeister@skiweltcup-garmisch.com),  
m: +49(0) 170 4838723





## Getting There:



Garmisch-Partenkirchen is located in a valley-basin and can be reached from three directions - north, south and west:

### Coming from Germany (north):

There are trains from Munich directly to Garmisch-Partenkirchen. Arriving by car, you should use the A95 from Munich to Garmisch-Partenkirchen. The last 10km are on „B2“. Travel time is approximately 1 hour by both train or car.

### Coming from Austria (south or west):

Garmisch-Partenkirchen can be access from the south from Innsbruck via Seefeld, Scharnitz and Mittenwald on the „B2“. There is also a train from Innsbruck to Garmisch-Partenkirchen.

Garmisch-Partenkirchen can be access from the west via the Fernpass-Bundesstraße“ from Lermoos, Ehrwald and Griesen on the B23

## Contacts:

| Pharmacy:            [www.aponet.de](http://www.aponet.de)

Doctor:                medical on-call service, telephone number 116 117

| Dentist:              ditto

Hospital:              Klinikum Garmisch-Partenkirchen GmbH, Auenstraße 6,  
82467 Garmisch-Partenkirchen, ph. 08821 77-0

Emergency:           Police: 110, Fire Department: 112

## Useful Links:

[www.skiweltcup-garmisch.com](http://www.skiweltcup-garmisch.com)

[www.gapa-tourismus.de](http://www.gapa-tourismus.de)

[www.bayregio-garmisch-partenkirchen.de](http://www.bayregio-garmisch-partenkirchen.de)

[www.deutscherskiverband.de](http://www.deutscherskiverband.de)

[www.fis-ski.com](http://www.fis-ski.com)